

Springboard

Springdale Heights Public School | 25 Cardo Drive Lavington NSW 2641 | p: 0260 256 433 f: 0260 402 328 | e: springdale-p.school@det.nsw.edu.au | w: www.springdale-p.schools.nsw.edu.au
Principal: Miss Sue Farmer

Term 2 - Week 4

Thursday 23 May 2019

Teddy Bear's Picnic



Years K to 2 classes had their very own picnic with their very trusty Teddy Bears last week.

Springdale Heights Pre School joined us for the fun!

Springdale Heights Pre School came along and joined in the fun as well. It was a beautiful sunny afternoon to enjoy the picnic and activities.

Thankyou to staff for making this a special day!



PBL Awards

Class Awards

Class Awards

Bronze Awards

Library Awards

Sports Awards

K-1 Blue

Olivia W
Lidia E
Dominic B
Yvonne B

K-1 Red

Fany K
Ollie Mc M
Max W

1-2

Ebony R
Owen C-L
Hoze H
Poppy L
Seth P

3-4 Blue

Ryan F
Mackenzie C
Michael F
Luca M-W
Woonsen P

3-4 Red

.

5-6 Blue

Isabelle W
Jasmine G
Celeste D
Max T

5-6 Red

Rhemi T
Savina C
Allira T-L
Terje C
Sandy M

PBL Value Awards

K-1 Blue

Brodie R

1-2

Koa P
Chelsea B

5-6 Blue

Tye C

K-1 Blue

..

K-1 Red

...

1-2

..

3-4 Blue

Zeek B
Maddie C

3-4 Red

..

5-6 Blue

..

5-6 Red

Terje C

K-1 Blue

Evelyn O'B
Nash F

K-1 Red

Hayley C
Ollie McM

1-2

Lucas R
Makaylah S

3-4 Blue

Ryan F
Rachel W

3-4 Red

Blake M
Amelia H

5-6 Blue

Violet H
Anastasie M

5-6 Red

Tiana H
Charli C

K-1 Blue

Oliver D
Blake B
Jonty L
Olivia W

K-1 Red

Bryan T
Theodore M
Ella B
Teegan H

1-2

Logan T
Lucas R
Poppy L
Seth P

3-4 Blue

Ally M
Maddi C
Noah P
Pixie H

3-4 Red

..

5-6 Blue

Connor W
Charlotte M

5-6 Red

Tamika C
Tiana H
Ethan T
Ben W



PSSA Sports



PSSA Sport starts Friday 7 June

If your child has been chosen to represent the school in the Primary Schools Sports Association (PSSA) competition, they will travel by bus to their sporting grounds.

Netball will be played each week at J C King Park and **Soccer** will be held at various venues. This year we will also field an **AFL** team and this will be played each week here at our school and other schools will travel to us to participate. The competition commences Friday 7 June and finishes Friday 16 August.

Permission notes have been sent home with selected students along with a **Sport Code of Conduct** form. Both forms must be filled in and returned before your child can play.

Bus cost is \$3.00 per week to be paid each Friday. You can choose to pay \$27 up front to cover the whole 9 week season.

Sports uniform must be worn. Shin pads and football boots are compulsory (for Soccer). Make sure that your child brings a drink for half-time and after the game.

Public Speaking

School Public Speaking

The School Public Speaking was held last Friday and we would like to congratulate all students on presenting outstanding speeches.

Year's 3 & 4 speeches were presented on

'The day I met an Alien...'. Speakers were; Mikayla W, Kiana T, Jack T, Tyson C, Charlotte C, Rachel W, Kelsey S, and Alyssa C. Congratulations to Jack T on being the winner of this round in the school age group.

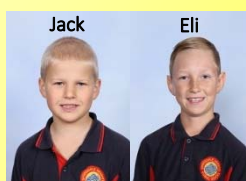
Year's 5 & 6 speeches were presented on **'What if you ended up in the middle of your favourite book.'**

Speakers were; Max T, Celeste D, Jasmine G, Isabelle W, Sandy M, Rhemi T, Tylah T-M, and Eli P. Congratulations to Eli P on being the winner of this round in the school age group.

Staff had a difficult decision as all of the students had written exceptional speeches and presented them in entertaining ways.

Jack & Eli will move to the next level of the Lions Club Public Speaking which will be held at Springdale Heights PS on Wednesday 5 June.

Good luck boys!





Tahnie



Angus



Lily

Year 1-2

Year 1/2 have completed a lot of artwork in class.
The children selected a piece of their artwork they wanted to show you.



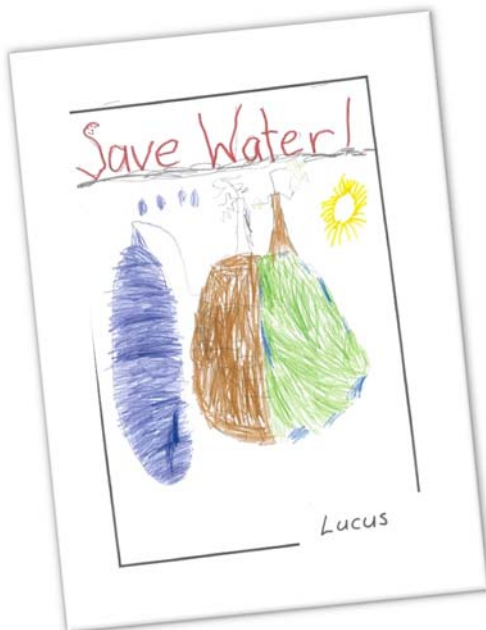
Owen



Koa



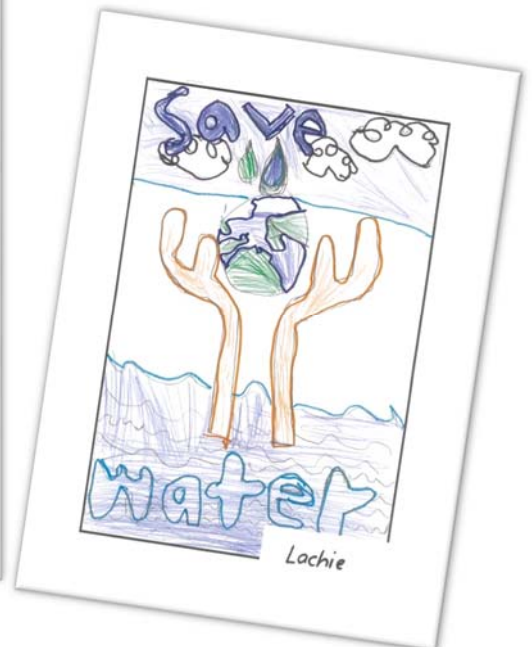
James



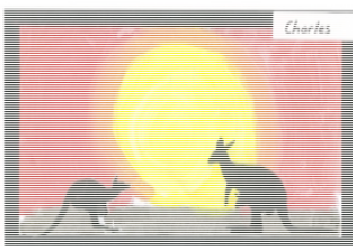
Lucus



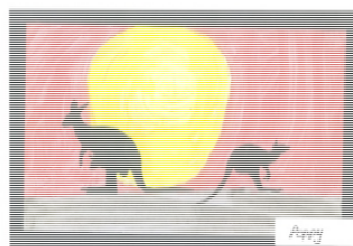
Shyindi



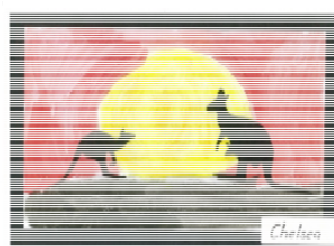
Lochie



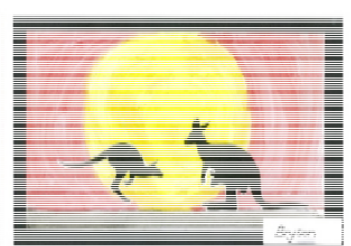
Charles



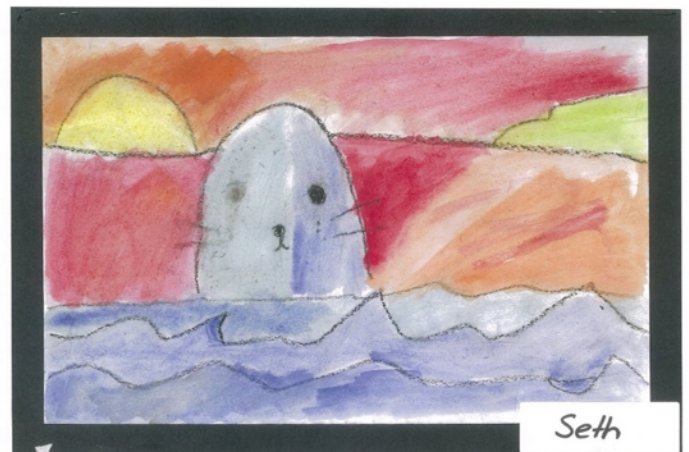
Poppy

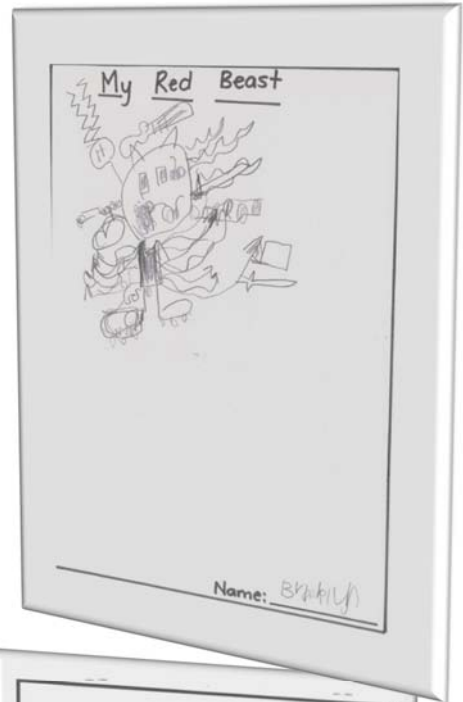


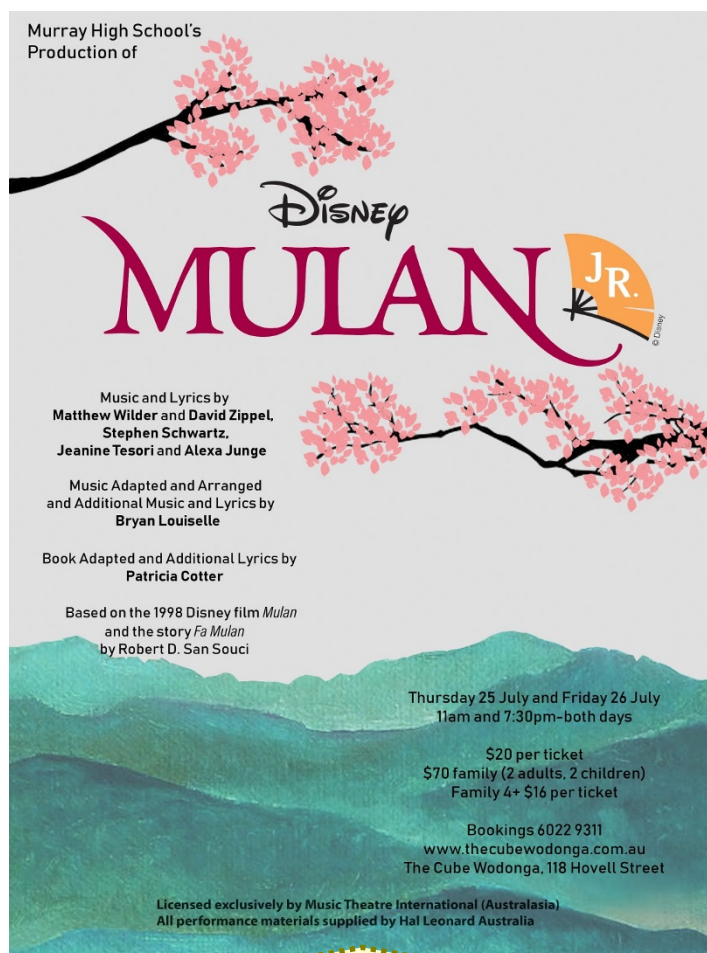
Chelsea



Boysen







Miss Farmer has purchased 50 tickets for this performance. Notes will go home in the next couple of weeks. Parents and the school community can purchase tickets online or phone the CUBE Wodonga.

FREE

1-2-3 Magic® & Emotion Coaching

2 session program:
Thursday 6 June 2019
Thursday 13 June 2019

9:30am to 1pm

Mission Australia
Level 1, Suite 1,
463-467 Kiewa St, Albury

This is a 2 session program—to complete the program you will need to attend all sessions

Learn to manage difficult behaviour in children 2-12 years old.

A program for parents and carer's of 2-12 year olds.

Learn:

- How to discipline without arguing, yelling or smacking
- How to sort behaviour
- How to handle challenging and testing behaviours
- Using emotion coaching to encourage good behaviour

Bookings are essential please contact your Case Manager or RSVP by emailing ParentingRiverina@missionaustralia.com.au or contact Stacey on 6942 8001 or Jayne 0428 162 559

Tea, Coffee and a Morning Tea will be provided
 (Please advise of any special dietary requirements at time of RSVP)
 Please note child care is not being provided

This course is being run by a Parentshop® licensed practitioner. www.parentshop.com.au

FREE

Open to the Community

Please consider becoming a cantzen volunteer

| Week | Wednesday | Thursday | Friday |
|-------|-------------|-------------|---------------------|
| Wk 5 | 29/5/19 | 30/5/19 | 31/5/19 |
| | Nicole | Jacki | Fiona Kim |
| Wk 6 | 5/6/19 | 6/6/19 | 7/6/19 |
| | Meal Deal | Nicole | Fiona Kim |
| Wk 7 | 12/6/19 | 13/6/19 | 14/6/19 |
| | Help needed | Jacki | Kim |
| Wk 8 | 19/6/19 | 20/6/19 | 21/6/19 |
| | Help needed | Help needed | Kim Nicole |
| Wk 9 | 26/6/19 | 27/6/19 | 28/6/19 |
| | Help needed | Jacki | Kim |
| Wk 10 | 3/7/19 | 4/7/19 | 5/7/19 |
| | Help needed | Help needed | Fiona Kim Meal Deal |

ABSENCES

We would like to remind parents that regular attendance to school is compulsory. On occasions your child may need to be absent from school, eg; being sick, family reasons or unavoidable appointments. Following an absence from school you must ensure that within seven days you provide the school with a verbal or written explanation for the absence.

Lateness

It is equally important to arrive at school on time daily as this ensures that students

- ◆ do not miss out on important learning activities scheduled early in the day
- ◆ helps students learn the importance of punctuality and routine
- ◆ reduces classroom disruption
- ◆ gives students time to greet their friends before class.
- ◆ Lateness is recorded as a partial absence and must be explained by parents.

All students who arrive late to school must come to the office to sign in and take a red card to the class teacher. Early leavers also need to come to the office to sign out.

The CATCH UP Athletics Carnival will be held next Wednesday 29 May. Those students attending will travel by bus to Alexandra Park and will leave school at 11.15am returning by 3pm. Students will be participating in the relay events and the remaining high jump events, that had to be cancelled due to the wet weather. Please read your note carefully for full details and information of the day. Miss Heinjus and Mrs Purss-Semple will co-ordinate this event.



EnviroMentors

This week we have had Tiffany from the EnviroMentors Program visit our school. Tiffany spoke to all classes on the importance of looking after the environment and the impact some products have on our environment.

Our school was taught a module on recycling, to encourage students to become environmental stewards in their households, spreading the message to the wider community. By learning about reducing natural resource, energy and water use, students are motivated, willing and able to adopt correct recycling actions.



2019 TERM TWO CALENDAR

All assemblies are at 2.30pm unless notified otherwise

Please read carefully as changes will be made regularly

| | Monday | Tuesday | Wednesday | Thursday | Friday |
|---------|---|---|--|--|---|
| | Breakfast Club 8.30—8.55am served at the canteen | Breakfast Club 8.30—8.55am served at the canteen | | Assemblies 2.30pm | |
| Week 4 | 20/5 | 21/5 | 22/5 Environmentors Program | 23/5 Environmentors Program Year 1-2 Assembly 2.30pm | 24/5 Zone PSSA Cross Country |
| Week 5 | 27/5 | 28/5 Year 6 MHS Transition Day 8.50am to 12.10pm. Students will be walked over and back to MHS by a SHPS staff member | 29/5 CATCH UP - Athletics Carnival Responsible Pet Ownership Kinder 9.05 to 10.35am Yr's 1 & 2 9.55 to 10.35am | 30/5 | 31/5 Paul Kelly Cup 9.10—2.45 at Jelbart Park |
| Week 6 | 3/6 | 4/6 | 5/6 Lions Public Speaking from 9.15am Canteen Party Box Meal Deal \$5 | 6/6 K-1 Blue Assembly 2.30pm | 7/6 PSSA sport starts |
| Week 7 | 10/6 QUEENS BIRTHDAY HOLIDAY <u>NO SCHOOL</u> | 11/6 | 12/6 | 13/6 Riverina Cross Country | 14/6 |
| Week 8 | 17/6 | 18/6 | 19/6 | 20/6 K-1 Red Assembly 2.30pm | 21/6 |
| Week 9 | 24/6 | 25/6 Last day for Earn & Learn stickers | 26/6 | 27/6 Semester One student reports go home | 28/6 |
| Week 10 | 1/7 | 2/7 | 3/7 | 4/7 Assembly—awards only—no class item | 5/7 Last Day of Term 2 |



Games and activities provide students with practice in taking-turn, listening, sportsmanship and following instruction, whilst strengthening basic social and emotional life skills in other areas.

Social, Emotional and Resilience Program.

Students in Year's 3 & 4 are currently involved in a Social, Emotional and Resilience Program. The program is run by the Salvation Army and presented by Bridgette each Tuesday for and will run for the whole of Term Two.

It is designed to help develop explicit skills and strategies related to social emotional development, building and maintaining friendships and leadership skills.

